

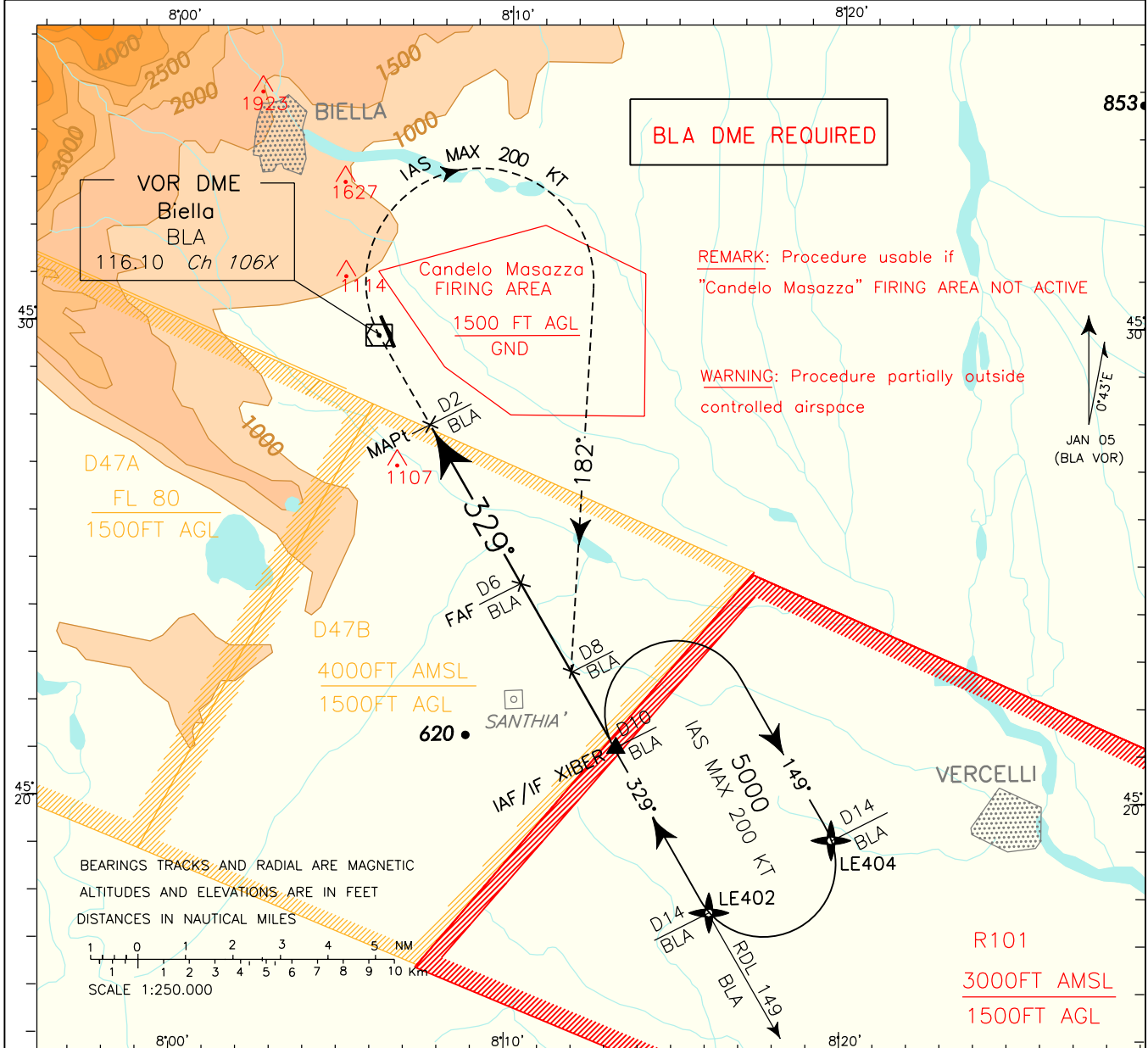
ICAO – INSTRUMENT APPROACH CHART

AD 2 LILE 5-1

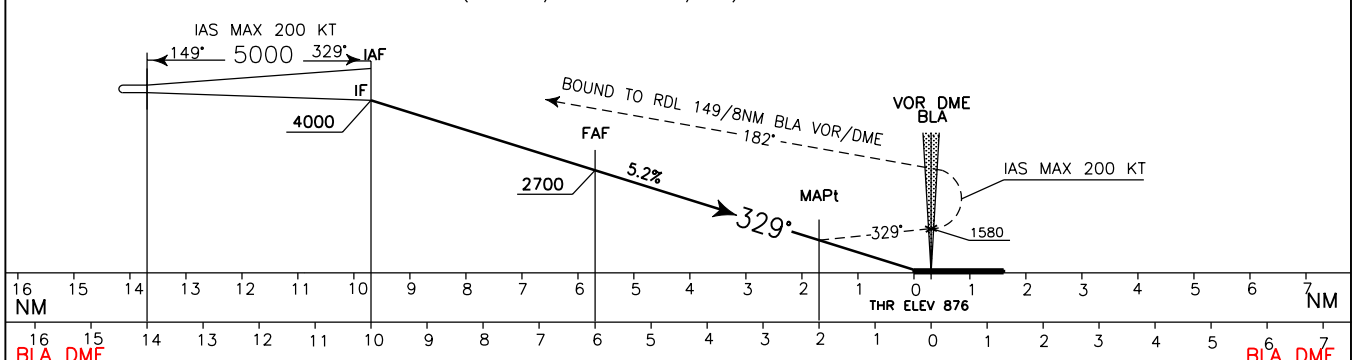
DOC 8168 ED4-1993 AMD 12

NEW CHART

<p>Warning: Due to surrounding military areas the procedure shall be performed only after coordination with the appropriate ATS Military Unit (Milan SCCAM)</p>	<p>Milano Radar 134.175 135.075</p>	<p>Torino APP/Radar 129.275 (121.10)</p>	<p>AD ELEV 920</p>	<p>BIELLA/CERRIONE VOR Z RWY 34</p>
	<p>AFIS Biella Info 123.050</p>		<p>L I L E</p>	



TRANSITION ALTITUDE 6000 MISSED APPROACH: Proceed on RDL 149 BLA VOR (TR 329°) climbing to 5000ft. Over BLA VOR (1580ft) turn right TR 182° (IAS Max 200 Kt during turn) to join RDL149 BLA VOR bound to XIBER holding pattern (RDL 149/10NM BLA VOR/DME)



STRAIGHT IN APPROACH	OCA (OCH)				CIRCLING SECTOR 	FT PER MIN	GS	FAF-MAPt		MAPt-THR		MNM SECT ALT	
	A	B	C	D				4 NM	1.71 NM	VOR DME	BLA		
VORDME	1470 (594)					849	160	1:30	0:38				
CIRCLING	1470 (550)	1570 (650)	1950 (1030)	2750 (1830)		743	140	1:43	0:44				
						637	120	2:00	0:51				
						531	100	2:24	1:02				
						425	80	3:00	1:17				

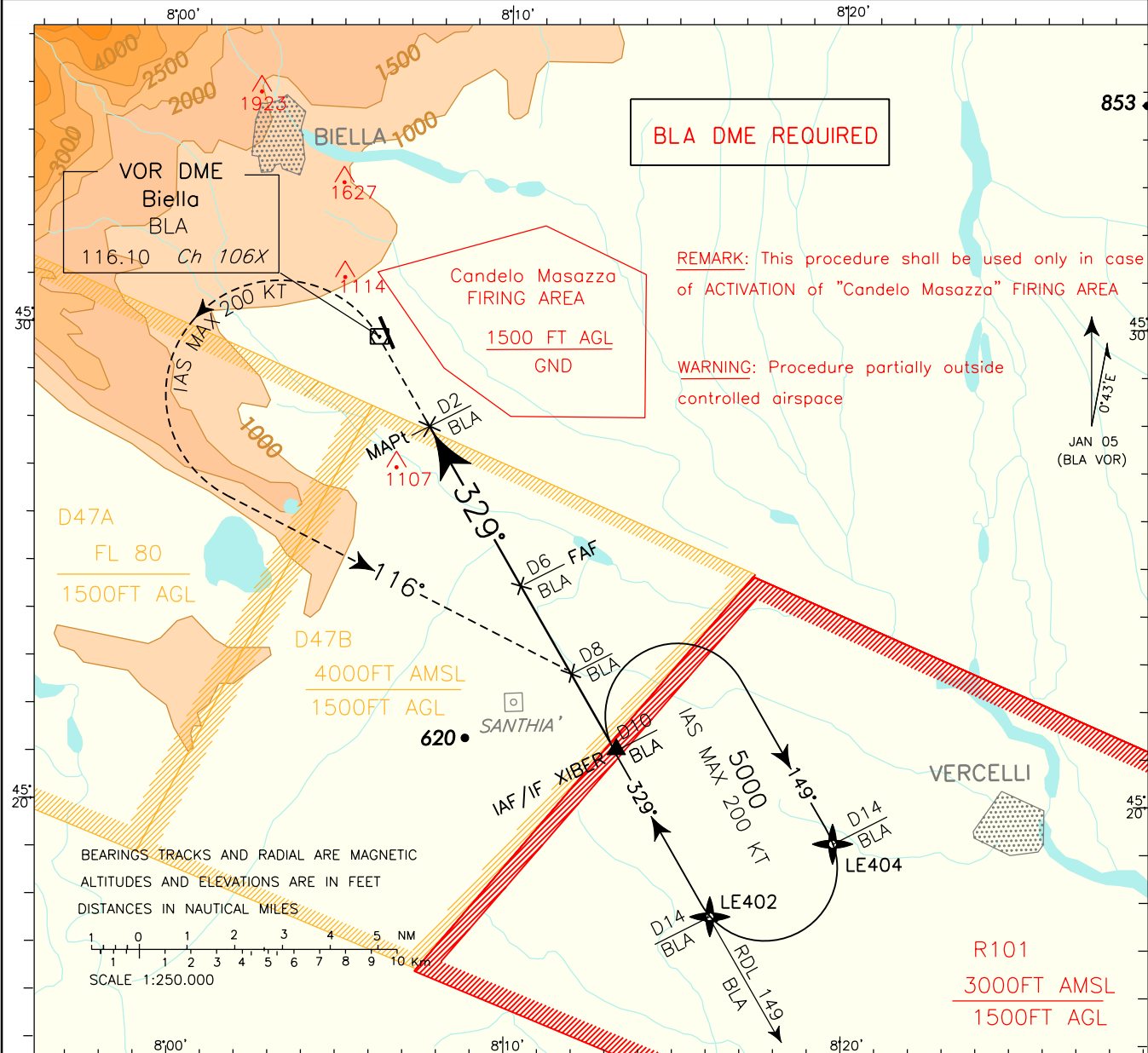
Warning: Due to surrounding military areas the procedure shall be performed only after coordination with the appropriate ATS Military Unit (Milan SCCAM)

Milano Radar 134.175 135.075
 Torino APP/Radar 129.275 (121.10)
 AFIS Biella Info 123.050

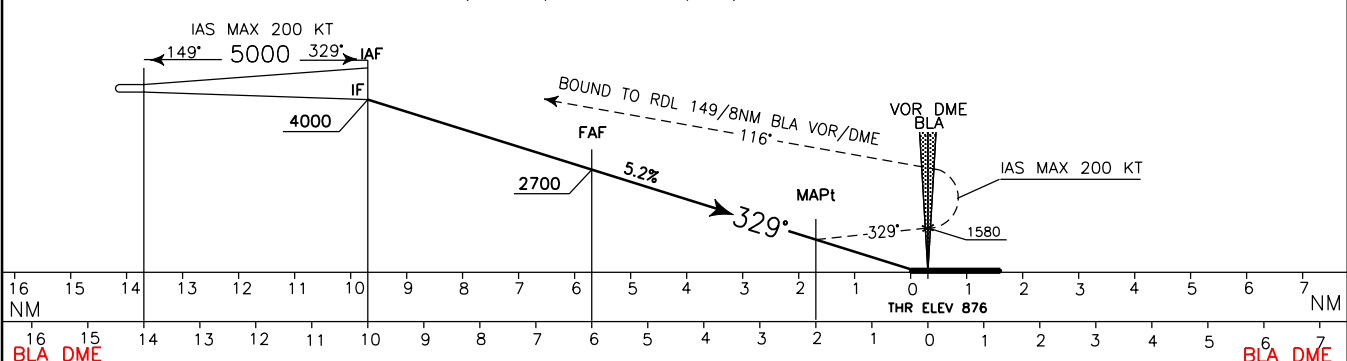
AD ELEV 920
BIELLA/ CERRIONE
 VOR Y RWY 34

DOC 8168 ED4-1993 AMD 12

NEW CHART



TRANSITION ALTITUDE 6000 MISSED APPROACH: Proceed on RDL 149 BLA VOR (TR 329°) climbing to 5000ft. Over BLA VOR (1580ft) turn left TR 116° (IAS Max 200 Kt during turn) to join RDL149 BLA VOR bound to XIBER holding pattern (RDL 149/10NM BLA VOR/DME)



STRAIGHT IN APPROACH	OCA (OCH)				CIRCLING SECTOR 	FT PER MIN	GS	FAF-MAPt		MAPt-THR		MNM SECT ALT
	A	B	C	D				4 NM	1.71 NM	VOR DME	BLA	
VORDME Missed Approach Grad. 5%	1470 (594)					849	160	1:30	0:38			
VORDME Missed Approach Grad. 2.5%	1800 (924)					743	140	1:43	0:44			
CIRCLING	1470 (550)	1570 (650)	1950 (1030)	2750 (1830)		637	120	2:00	0:51			
					425	80	3:00	1:17				